

# NATIONALES CENTRUM FÜR TUMORERKRANKUNGEN

Christof von Kalle

**Smart Data in Oncology**

Hasso Plattner Institut Potsdam

1<sup>st</sup> June 2017

**dkfz.**



UniversitätsKlinikum Heidelberg

50 Jahre – Forschen für  
ein Leben ohne Krebs



# Oncology – A Leading Topic in Heidelberg

EXCELLENCE in

- ❖ Clinical Translation and Basic Research
- ❖ Clinical and Translational Cancer Programs
- ❖ Interdisciplinary Patient Care







UniversitätsKlinikum Heidelberg



**dkfz.**

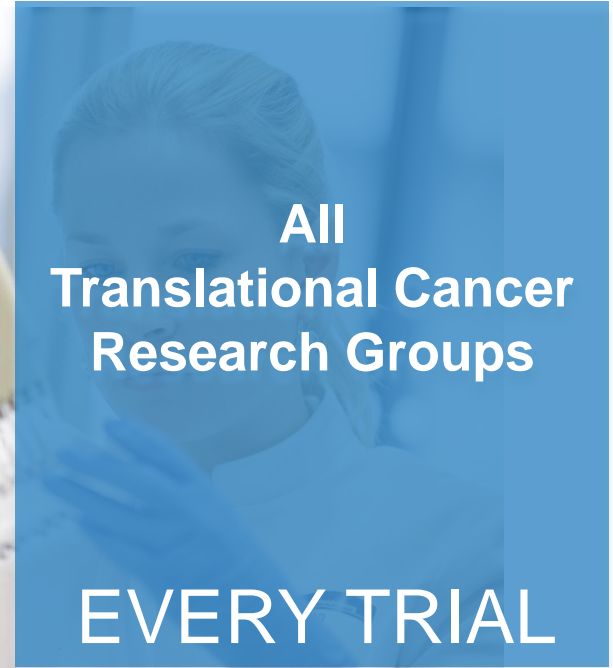
**All  
Clinical Departments  
with Oncological  
Activities**

**EVERY PATIENT**

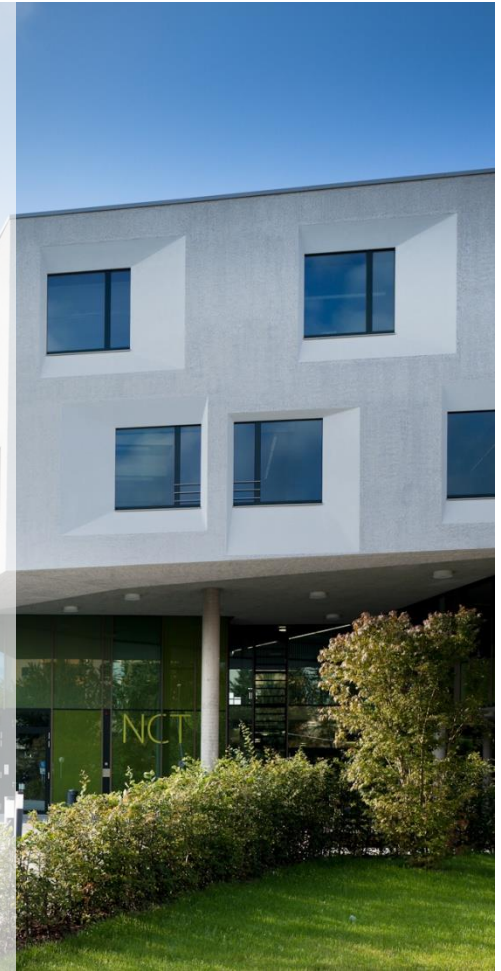
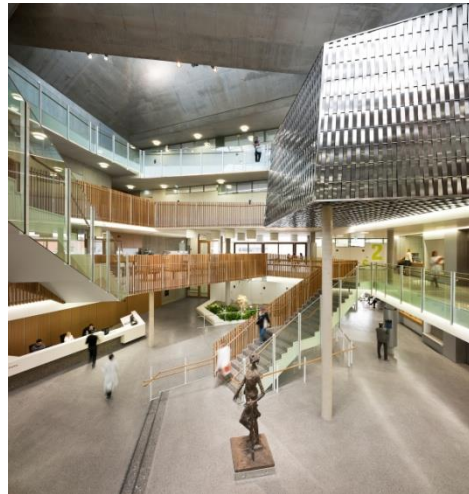


**All  
Translational Cancer  
Research Groups**

**EVERY TRIAL**



**Creating Interdisciplinarity**



**IDENTITY & VISIBILITY**



**DELIVER**

Precision Oncology

**EXCEL**

Clinical and Translational  
Cancer Programs

**GROW**

Building  
Partners

**SCIENTIFIC &  
CLINICAL EXCELLENCE**





- Position NCT as a Leading Comprehensive Cancer Center in Europe
- Expand NCT Precision Oncology Program
- Deliver at the Point of Care  
Translation – Personalization – Precision
- Expand Internationally Recognized Clinical Cancer Programs & Profile Areas
- Employ Novel, Innovative Treatment Concepts

## FUNDING

New Research Building

CCC Building funded by DKH

## PROFILE AREAS / RECRUITMENTS

- ❖ Innovative Medical Oncology
- ❖ Translational Research
- ❖ Radioimaging
- ❖ Theragnostics
- ❖ Link-up DKFZ HIPO, NCT POP & NCT MASTER
- ❖ Immunotherapy
- ❖ Systems Biology
- ❖ Multidisciplinary Profile Areas



## DELIVER

- ❖ NCT Precision Oncology
- ❖ Novel, Innovative Treatment Concepts
- ❖ Clinical Trials & Biobanking Infrastructure/Expertise



## EXCEL

- ❖ Molecular Stratification
- ❖ Immunotherapy
- ❖ Profile Areas -  
Neurooncology  
Pancreatic Cancer,  
Radiooncology,  
Lung Cancer,  
Prostate Cancer
- ❖ NCT OncoCheck-  
Programm
- ❖ Innovative Oncological  
Imaging
- ❖ Molecular Tumor  
Pathology
- ❖ Biomarker Platform
- ❖ NCT DataThereHouse &  
Cancer Registry
- ❖ New Programs –  
CardiOncology, Palliative  
Oncology, Hematology
- ❖ NCT Basic Research  
Pipeline

## GROW

- ❖ Partnerships
- ❖ Funding Programs
- ❖ Recruitments
- ❖ Talents
- ❖ Facilities





STRATIFIED ONCOLOGY

EARLY DIAGNOSIS

RISK STRATIFICATION

INDIVIDUALIZED  
THERAPY

PREVENTION

DATA  
INTEGRATION

TARGET  
EXPLOITATION

TARGET  
CHARACTERIZATION

TARGET  
IDENTIFICATION

NCT DataThereHouse  
Organized in  
SAP HANA

NCT OMICS

PATIENT ADMISSION – DOCUMENTATION - BANKING

# NCT DataThereHouse

Display Data from Various Sources for a Comprehensive Overview of Information Relevant for Personalized Treatment

SEQUENCING DATA

ARRAY DATA

CLINICAL PATHWAYS

UNSTRUCTURED DATA

INDIVIDUALIZED TREATMENT PLAN

DOCTOR'S LETTER

STRUCTURED DATA

PHYSICIAN

SCIENTIST

TUMOR BOARD

CASE MANAGER

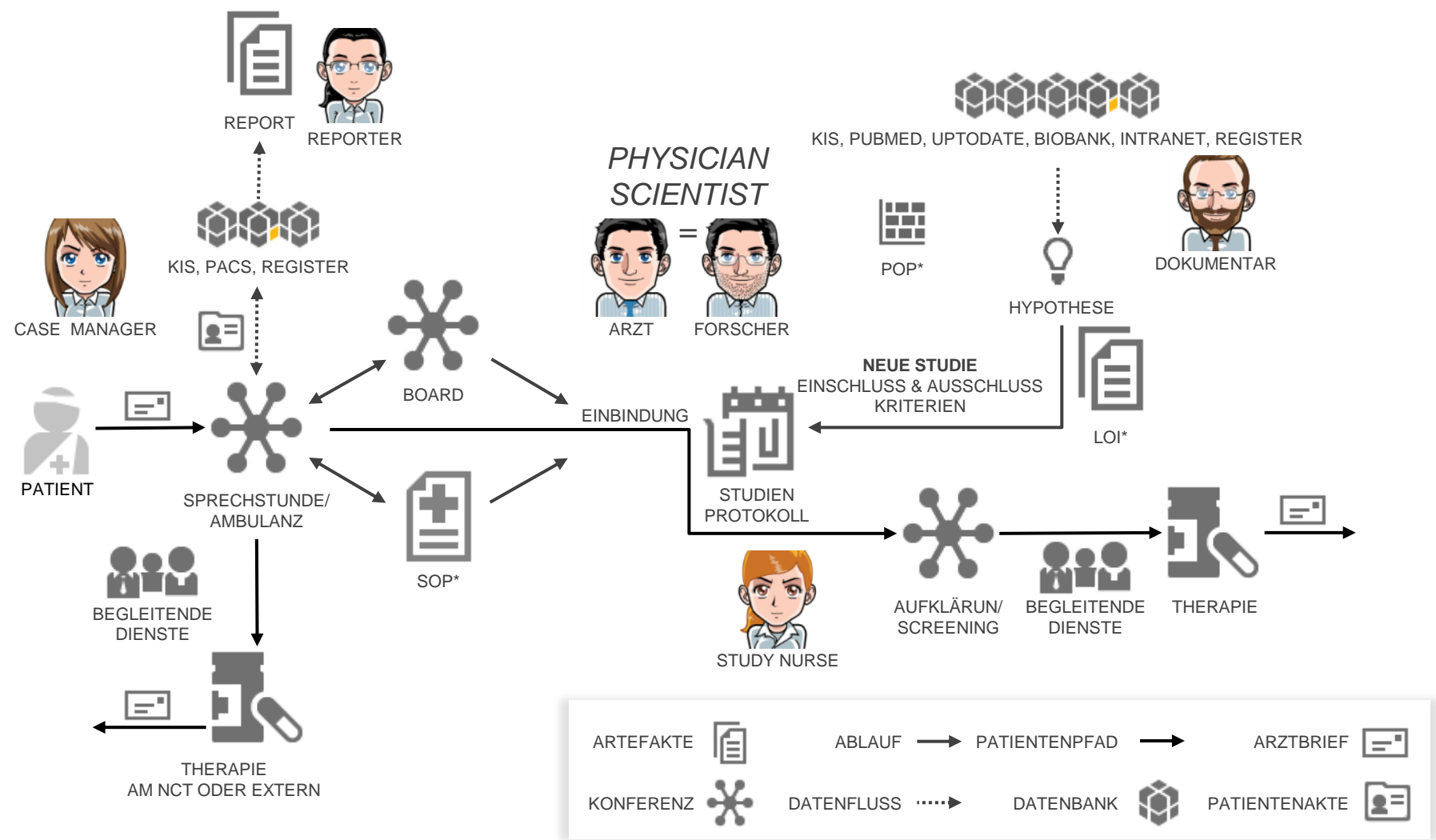
STUDY NURSE

DOCUMENTALIST

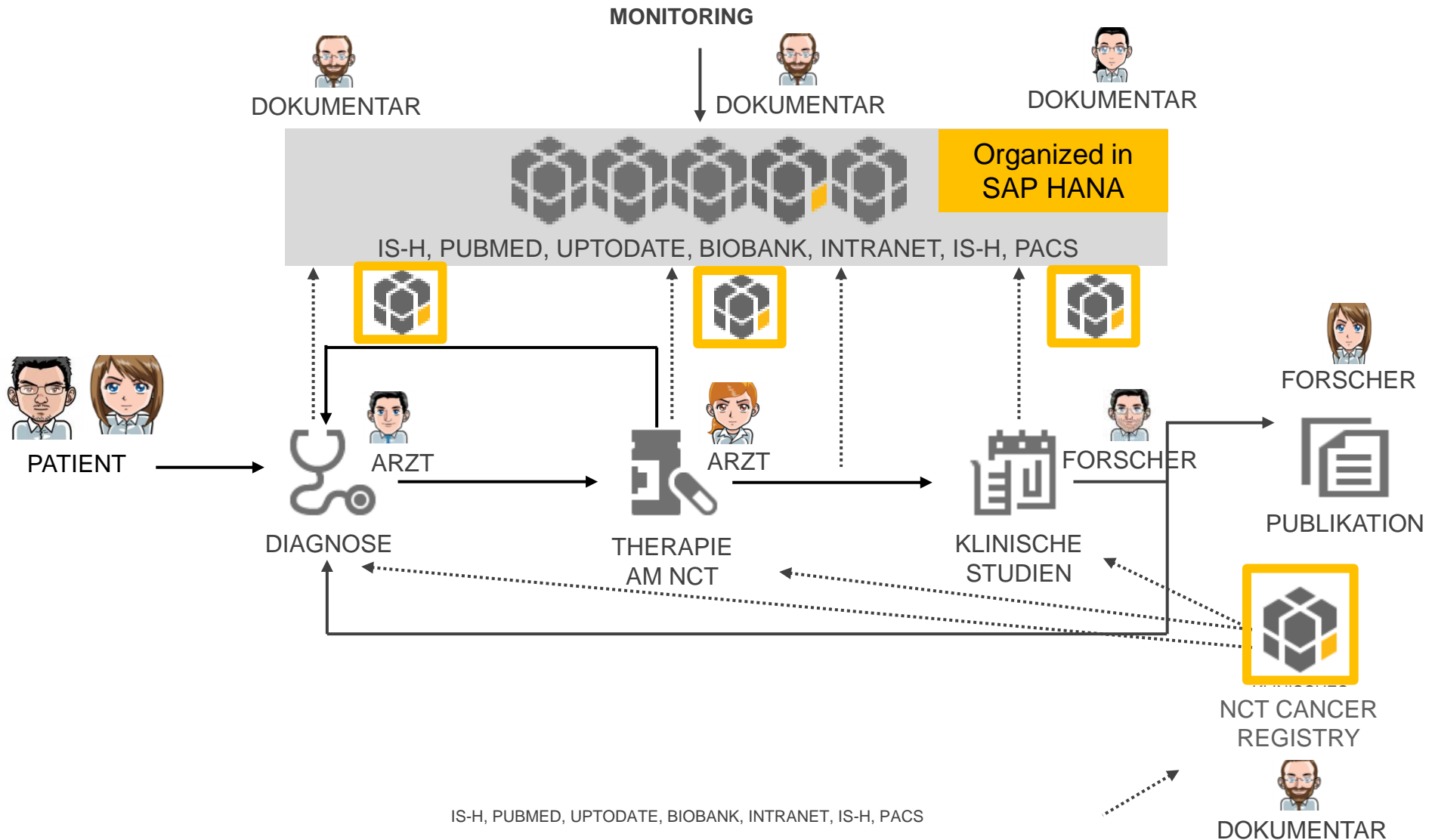




## Current Scenario



## NCT Clinical Development Strategy

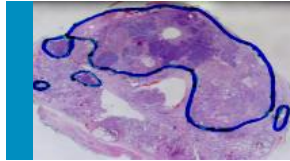




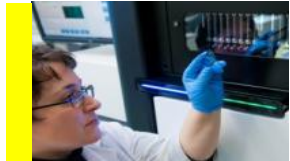
# NCT MASTER Workflow



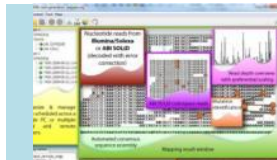
PATIENT ADMISSION  
ENROLLMENT  
CLINICAL DATA



DIAGNOSIS &  
SAMPLING



NCT OMICS



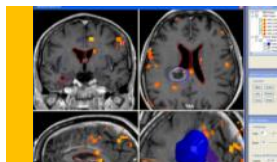
BIOINFORMATICS  
CLINICAL REPORT



MOLECULAR  
TUMOR BOARD



INDIVIDUALIZED  
THERAPY &  
TRIALS



RESPONSE  
RESISTANCE  
PREVENTION

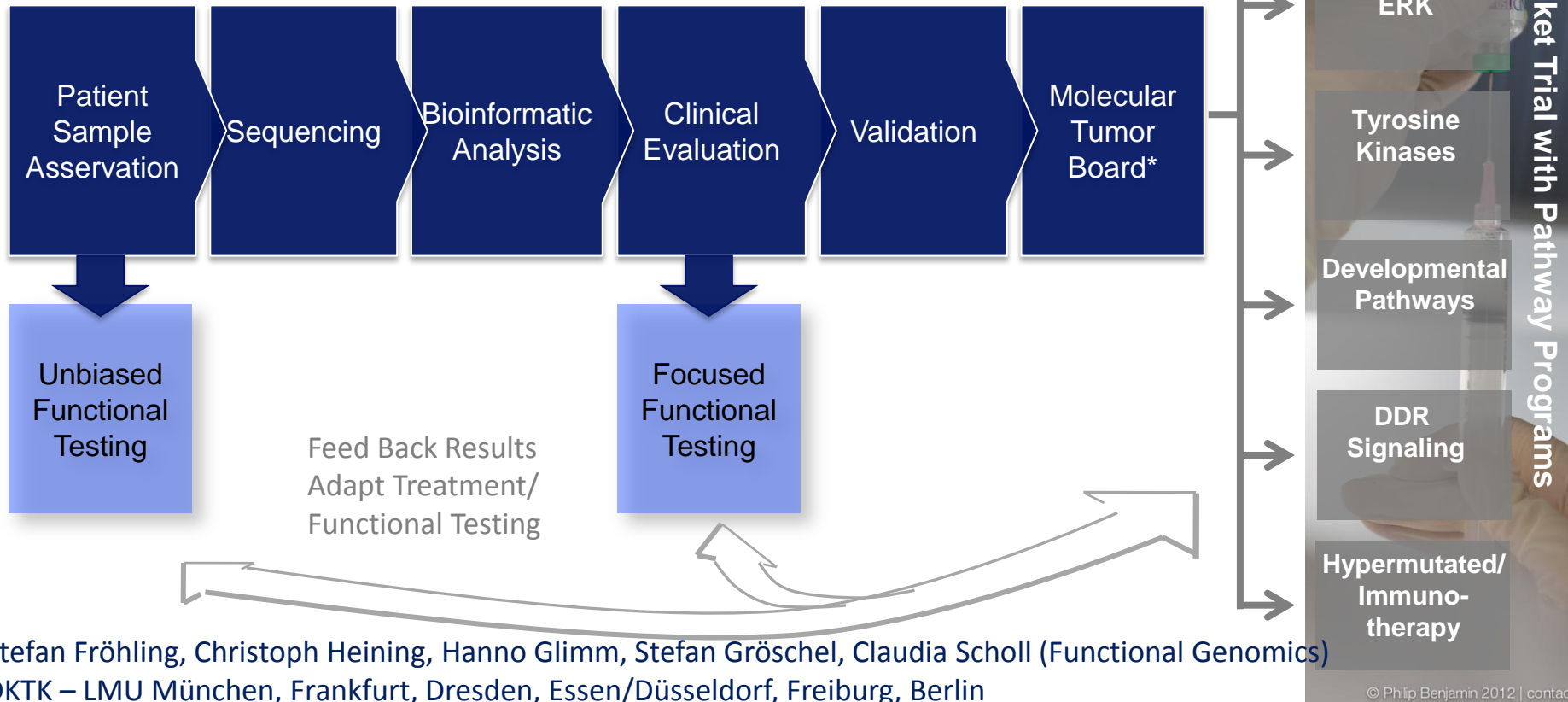


NCT DataThereHouse (SAP HANA)

# NCT MASTER – Registry & Interventional Trial



**Hanno Glimm**   **Stefan Fröhling**

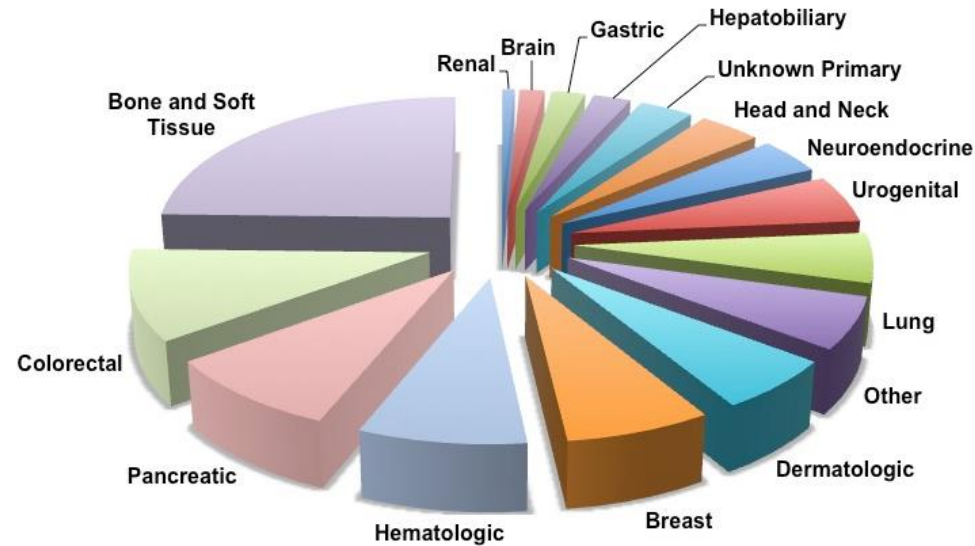




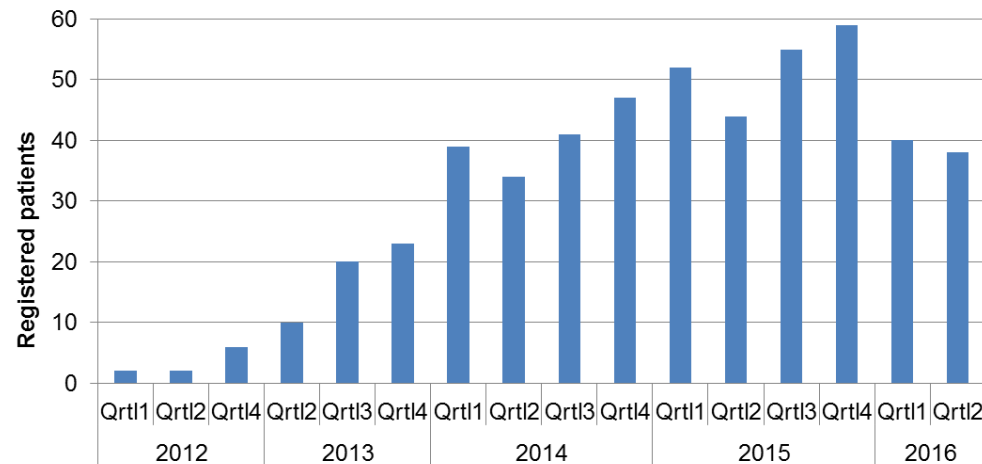
# NCT MASTER – Registry & Interventional Trial

## CURRENT STATUS

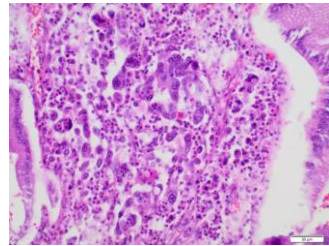
### Entities



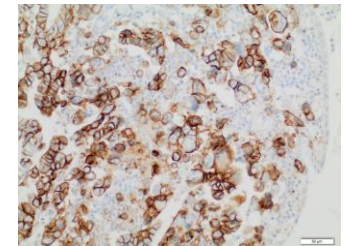
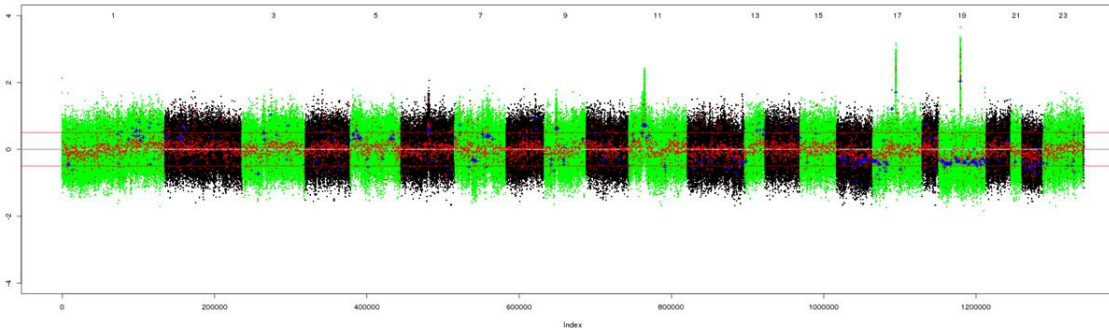
### Recruitment (May 2016)



# NCT MASTER – Case Report I)



**H&E**



**ERBB2**

## Metastatic gallbladder carcinoma

- Peritoneal and cutaneous metastasis during adjuvant chemotherapy with oxaliplatin/gemcitabine

## Amplification of chromosome 17q12, including *ERBB2*

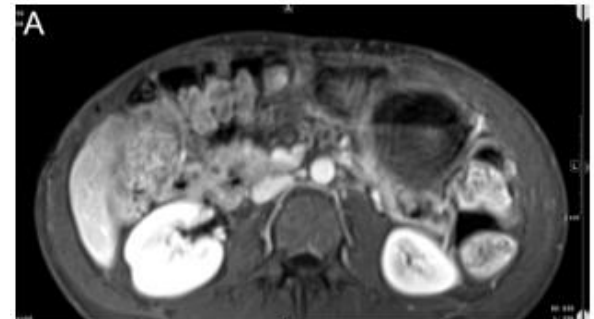
- Outlier *ERBB2* mRNA expression
- *ERBB2* protein expression by immunohistochemistry (3+ according to ASCO guidelines)



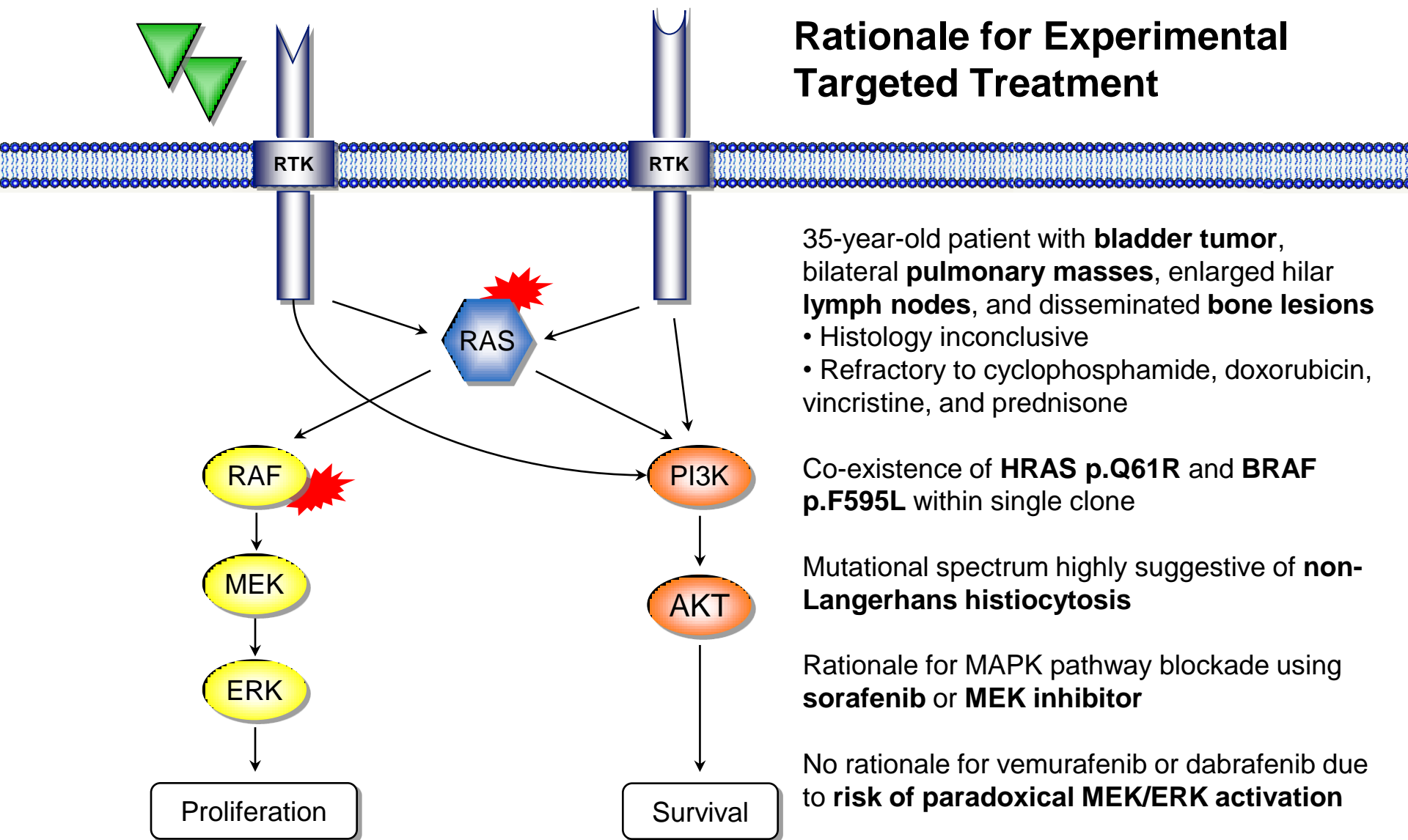
**Dual *ERBB2* blockade:  
trastuzumab/pertuzumab**

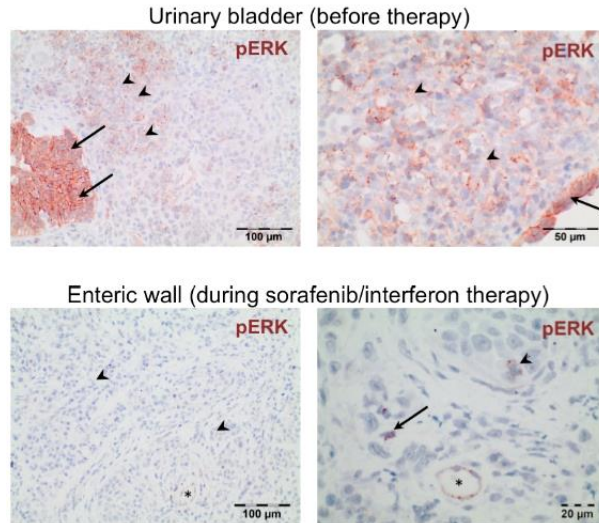


**Complete remission for  
>12 months**





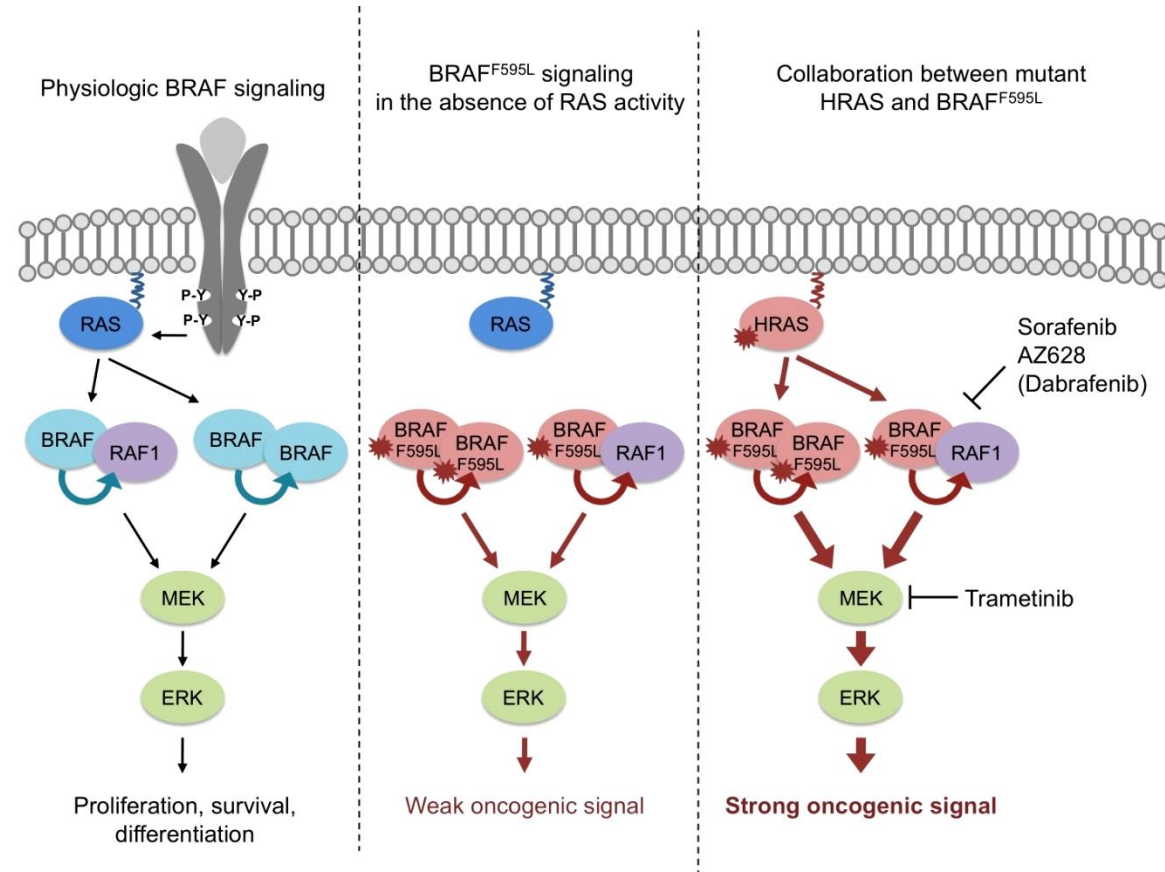




**Loss of phosphorylated ERK** expression in tumor cells after 3 weeks of **sorafenib** and interferon alpha treatment

Frequent **coexistence of intermediate-activity BRAF mutations** and **oncogenic RAS** in various cancers  
*Wan et al. Cell 2004*  
*COSMIC database*

## Rationale for Experimental Targeted Treatment

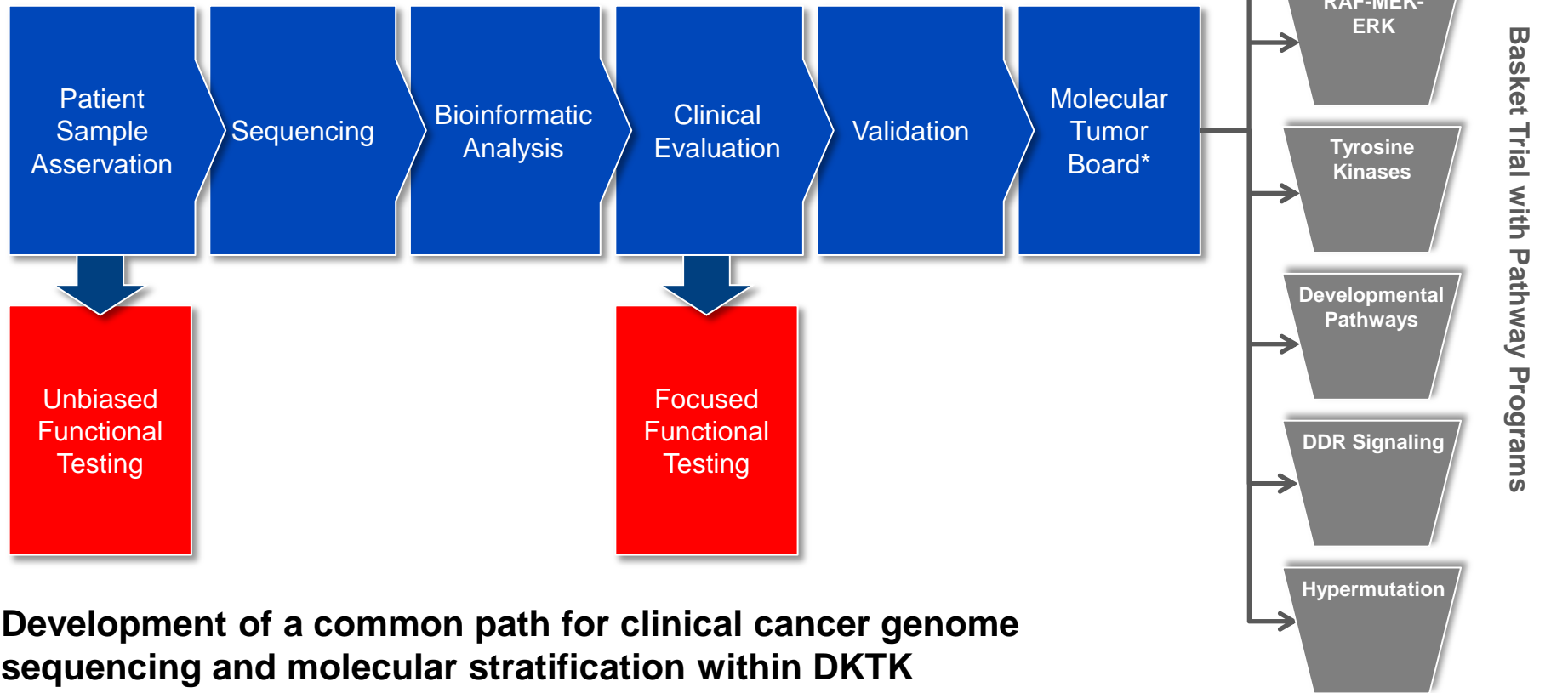


**Cooperative activity of BRAF p.F595L and HRAS p.Q61R** in aggressive histiocytic sarcoma

**Kordes et al. Leukemia 2016**

# DKTK MASTER

## *Critical Next Steps*



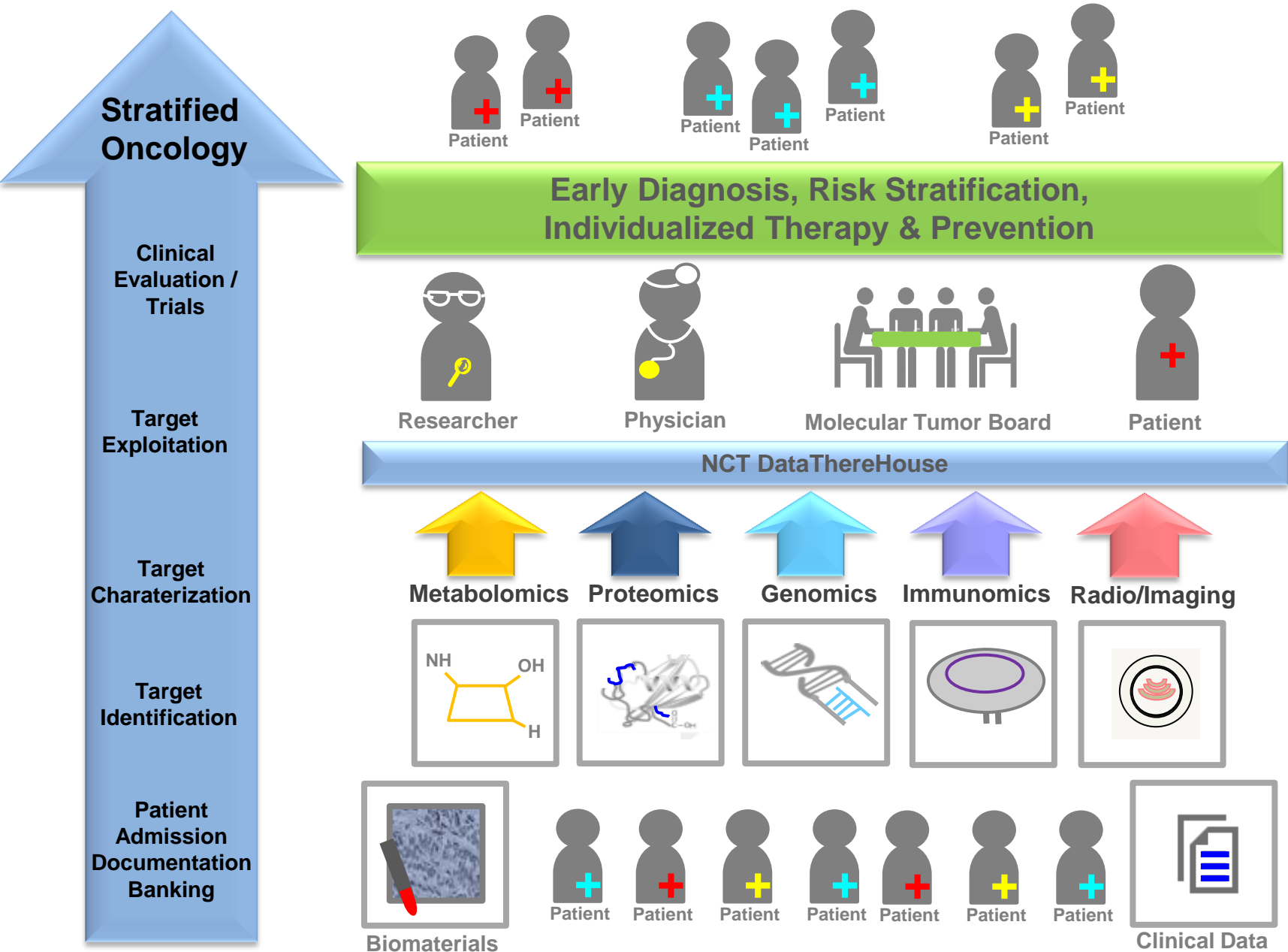
**Development of a common path for clinical cancer genome sequencing and molecular stratification within DKTK**

**Further development of strategies for clinical translation**

**Refinement and expansion of strategies for functional annotation**

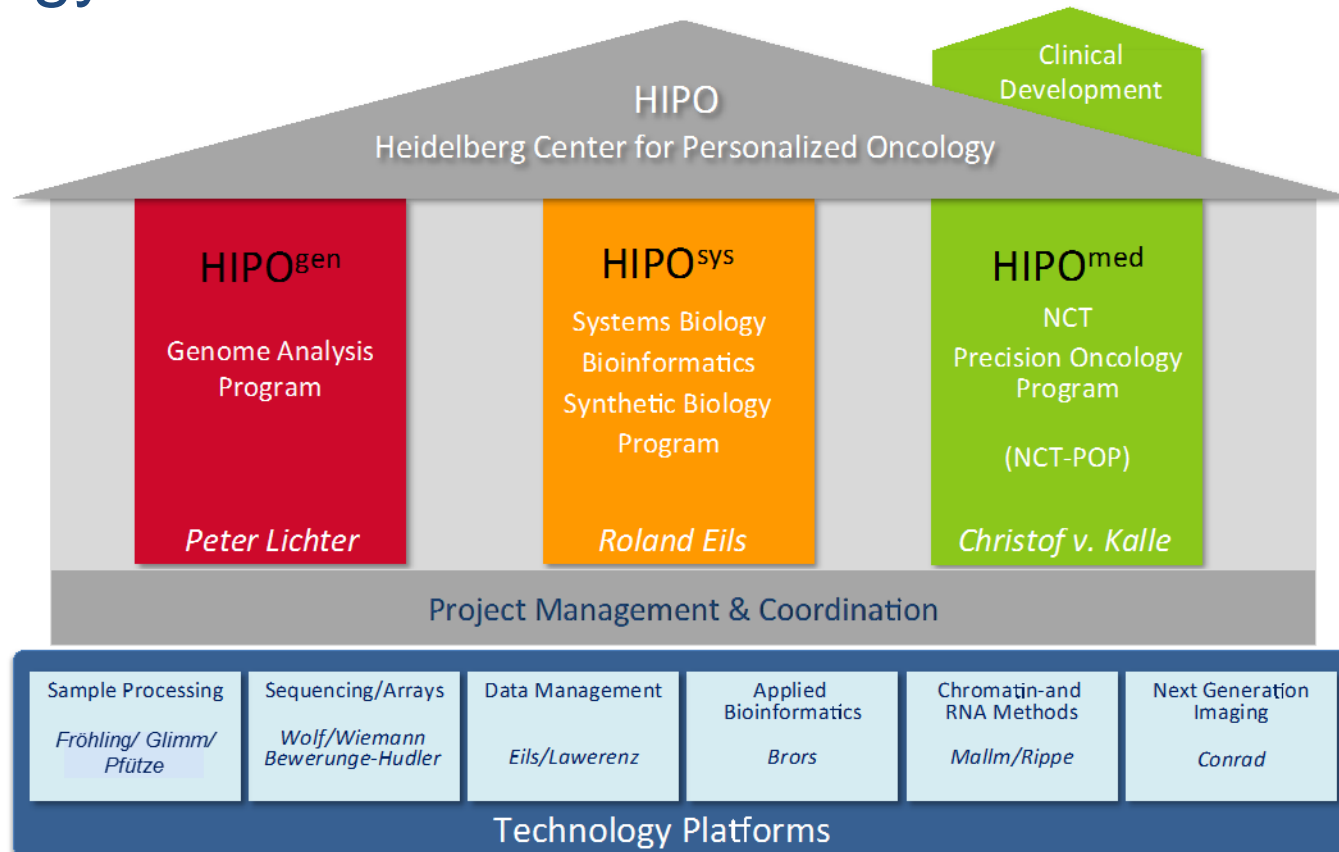


# NCT Precision Oncology Program

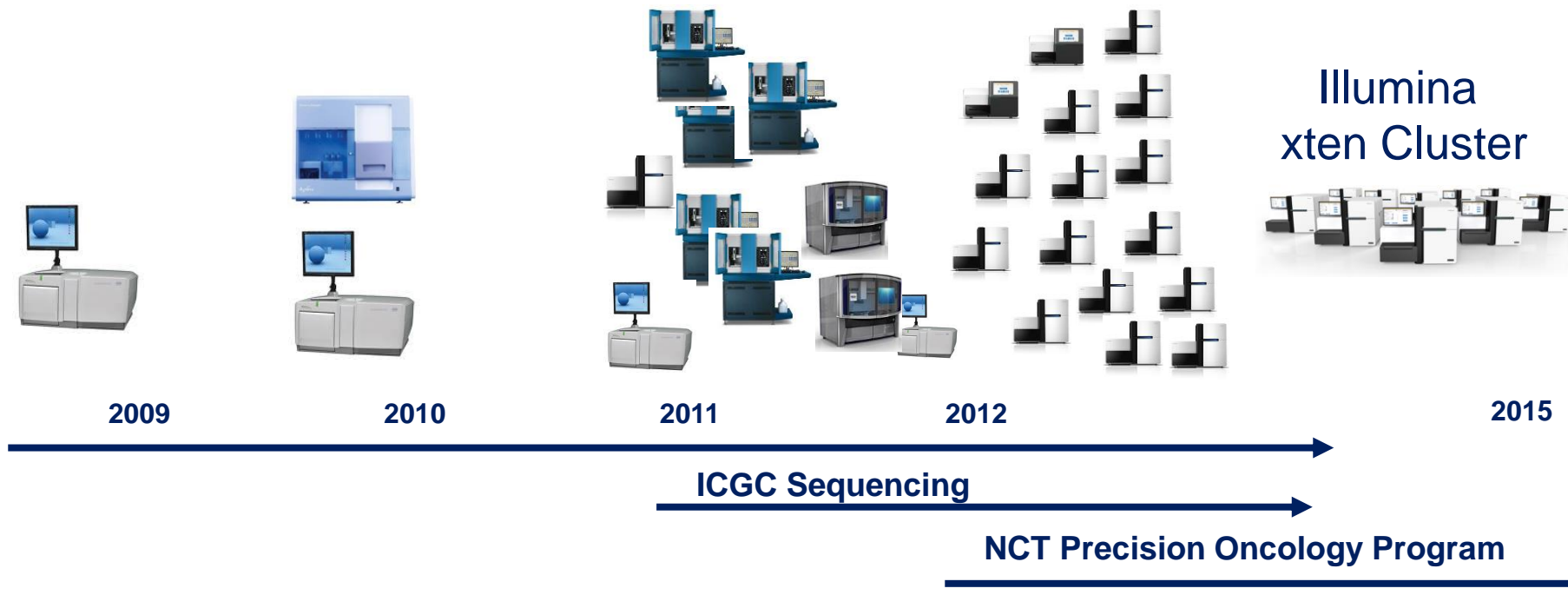


# Heidelberg Center for Personalized Oncology

**hipo**dkfz.



# National High Throughput Sequencing Core Unit



ICGC

ICGC PedBrain Tumor

International Cancer Genome Consortium

dkfz.

hipo<sup>dkfz.</sup>

INFORM

NCT POP

Personalized Oncology Program

Deutsches Konsortium für Translationale Krebsforschung





Benedikt Brors

## PRIMARY ANALYSIS

## SECONDARY ANALYSIS

### OneTouchPipeline

fastq QC

alignment

duplicates

lane merging

calculate coverage

genotype matching

Pathogen integration

Ploidy prediction

INDELs

SNVs

Copy number variants

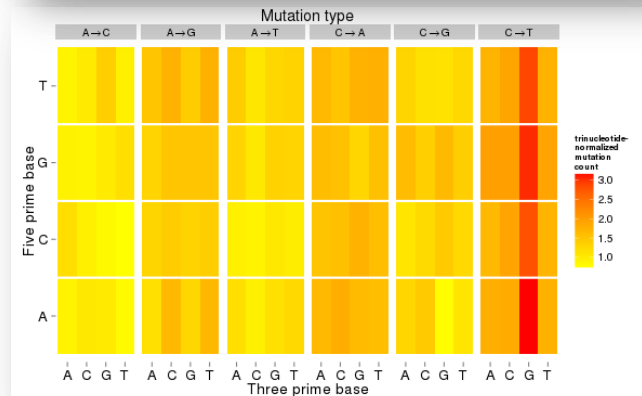
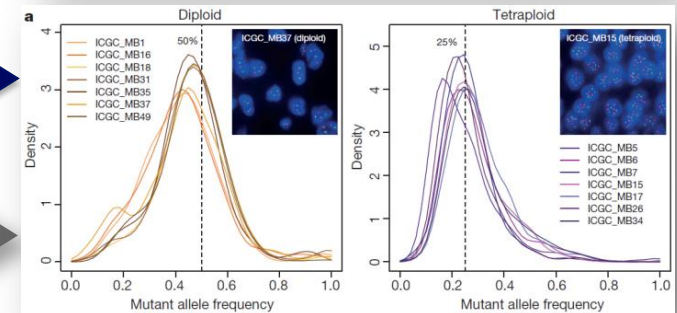
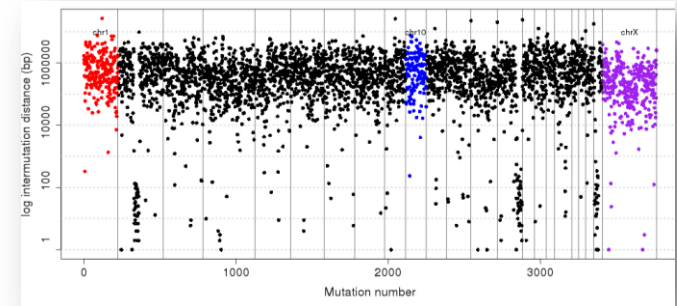
Structural Variants

Alternative Splicing

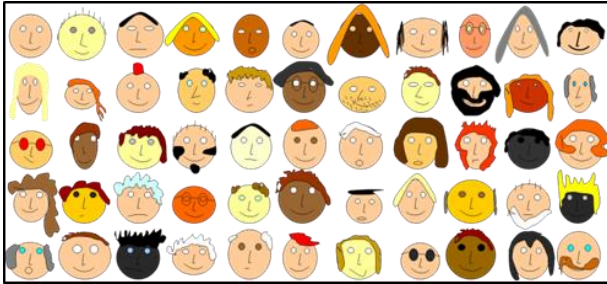
Mutation in RNAseq?

Mutation annotation

## TERTIARY ANALYSIS: „INTERPRETATION“



# INFORM = INdividualized therapy FORe Relapsed Malignancies in childhood



Angelika Eggert



Olaf Witt



Peter Lichter



Stefan Pfister

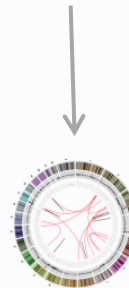
## Feasibility-Registry Study (Year 1+2)

ALL	AML
HGG (incl. DIPG)	Medullo/Ependym.
Ewing Sarcoma	Neuroblastoma
NHL	Osteosarcoma
Rhabdomyosarcoma	Rhabdoid Tumors



## Clinical Trial (Year 3-5)

Enrollment



Phase I/II

Standard of Care: Backbone  
Chemotherapy

Backbone

Targeted  
Drug 1

Targeted  
Drug 2

# Big Data in Oncology for personalized medicine...

- needs to RETHINK the old & the new
- needs SMART Data
- is a TEAM Effort

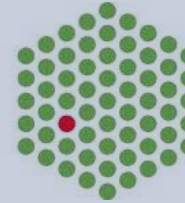




## Academic Collaboration



EMBL



**DKFZ-ZMBH  
ALLIANCE**

## Joint Industry-Academia Collaboration



## Cancer Core Europe Consortium Centers



NATIONAL CENTER FOR  
TUMOR DISEASES

NCT HEIDELBERG

THANK YOU

dkfz.



NCT



UniversitätsKlinikum Heidelberg

50 Jahre – Forschen für  
ein Leben ohne Krebs

