

To solve Exercise II you will use RapidMiner. To speed up the process, we prepared a Windows 7 Virtual Box image with everything you need already pre-installed and pre-configured. Please note that the OS license, as well as the tool's academic license is only valid for 3 months, after which they'll no longer be accessible. Access the MIMICIII database will also be withdrawn after the exercise's submission deadline.

1. Download and install VirtualBox.

To do so, just follow the link [1].

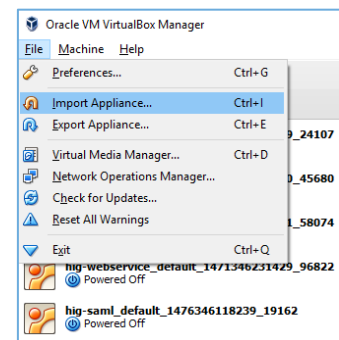


2. Download the Windows image.

Access the download [2] and unzip it to your preferred location.

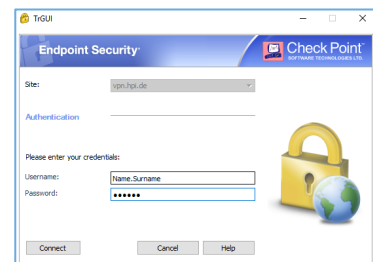
3. Run the virtual machine.

You will have access to a fully functional Windows 7 machine with RapidMiner pre-installed and pre-configured. To do so, choose *File* -> *Import Appliance* and select the file you just downloaded. Adjust the VM parameters (RAM available, etc.) according to your preferences and run the VM.



4. Connect to the HPI VPN.

Access to the database is restricted to the HPI network. To access it, please login onto the VPN using your HPI credentials on EndPoint Security (pre-installed). For further information on VPN access at the HPI, please consult [3].



5. Run RapidMiner.



You'll find the icon on the desktop. Note that the necessary data for the exercise is already available under *Local Repository > Data > MIMICIII*. More information on how to use RapidMiner is available here [4]. You are encouraged to play around with the tool before starting the exercise to get familiarized with it.

Links

- [1] <https://www.virtualbox.org/wiki/Downloads>
- [2] Links was shared via e-mail
- [3] <https://hpi.de/intern/>
- [4] <https://rapidminer.com/training/videos/>