



**Hasso  
Plattner  
Institut**

IT Systems Engineering | Universität Potsdam

## Complexity and Characteristics of Enterprise Applications

Trend & Concepts in the Software Industry - Lecture  
June 2011

# EA requirements are diverse and complex

2

## **SAP for Consumer Products:**

customers with multiple million sales  
order line items per day

## **SAP Enterprise Resource Planning:**

no maintenance downtime allowed  
for, e.g. the Apple iTunes Store

## **SAP Supply Chain Management:**

customers with over 3 million  
different product configurations

## **S A P H u m a n C a p i t a l Management:**

compute the payroll for 500.000  
employees within a few hours

## **SAP Netweaver Portal:**

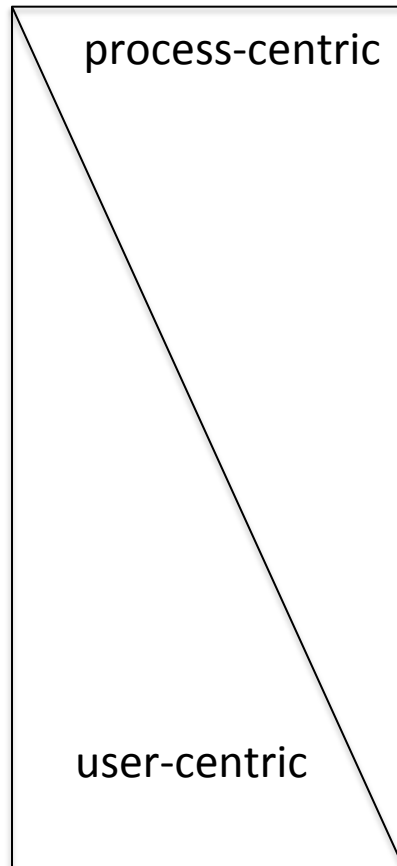
handle 300.000 users in a web  
portal (40.000 concurrently active)

## **SAP Business Intelligence:**

customer with a live database of 40  
terabytes in size

# EA have different interaction paradigms

3



Automated, machine-to-machine interaction

Repeated, batch-wise processing of data sets

Data entry (repetitive, transactional, isolated)

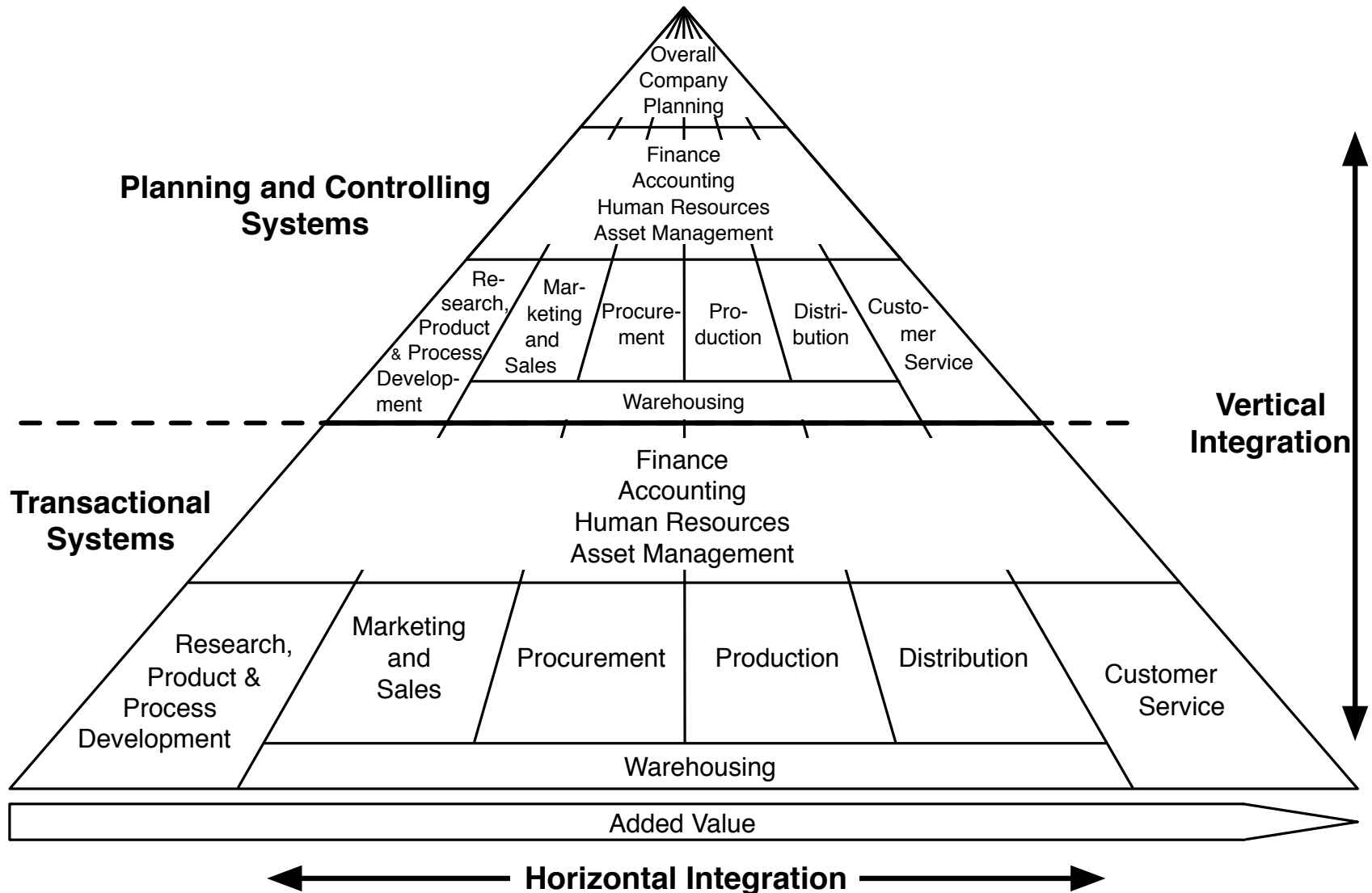
Transactional work with human workflow

Collaborative workflow amongst people

Unstructured, ad-hoc collaboration

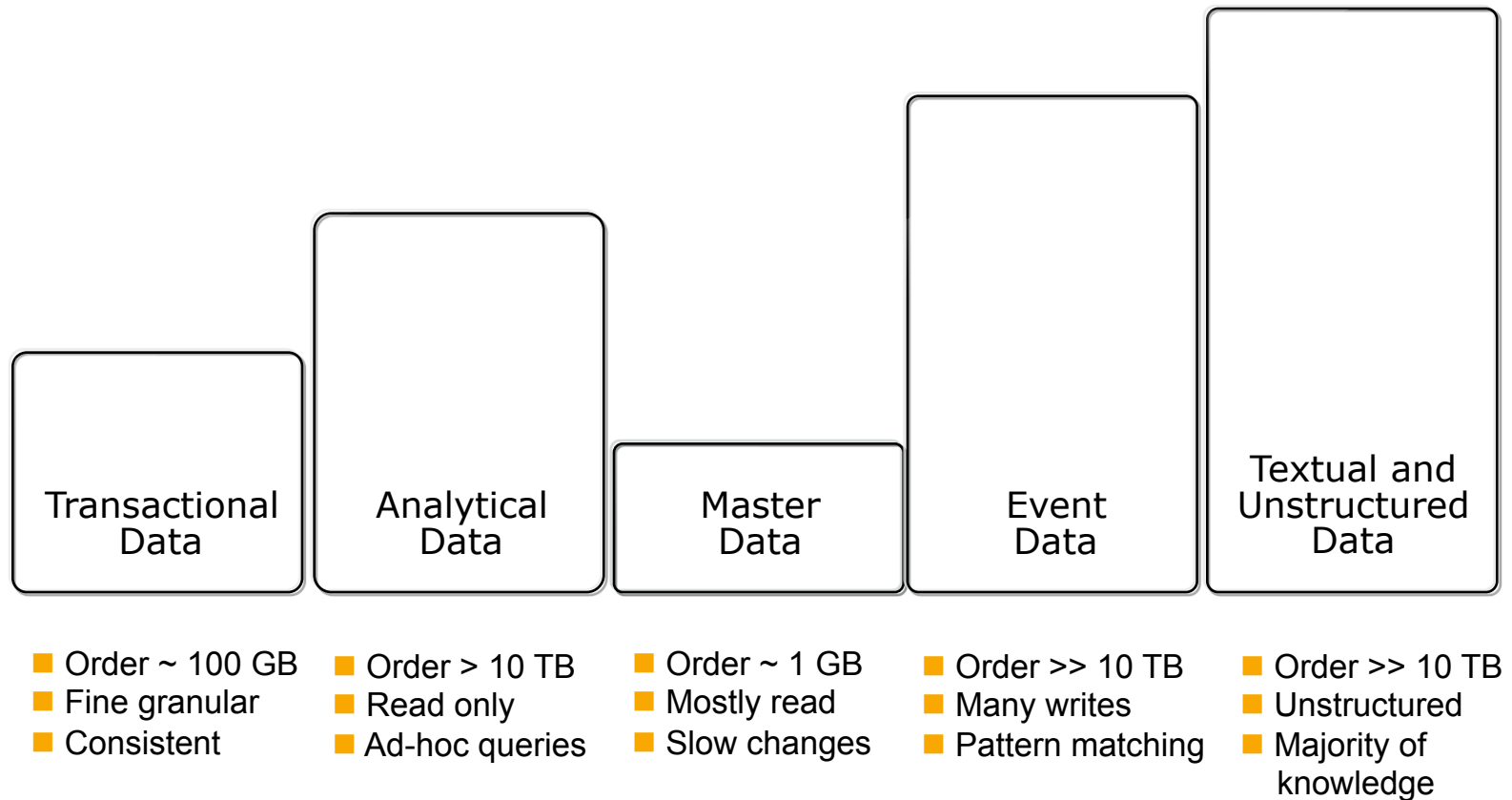
# EA are highly integrated systems

4



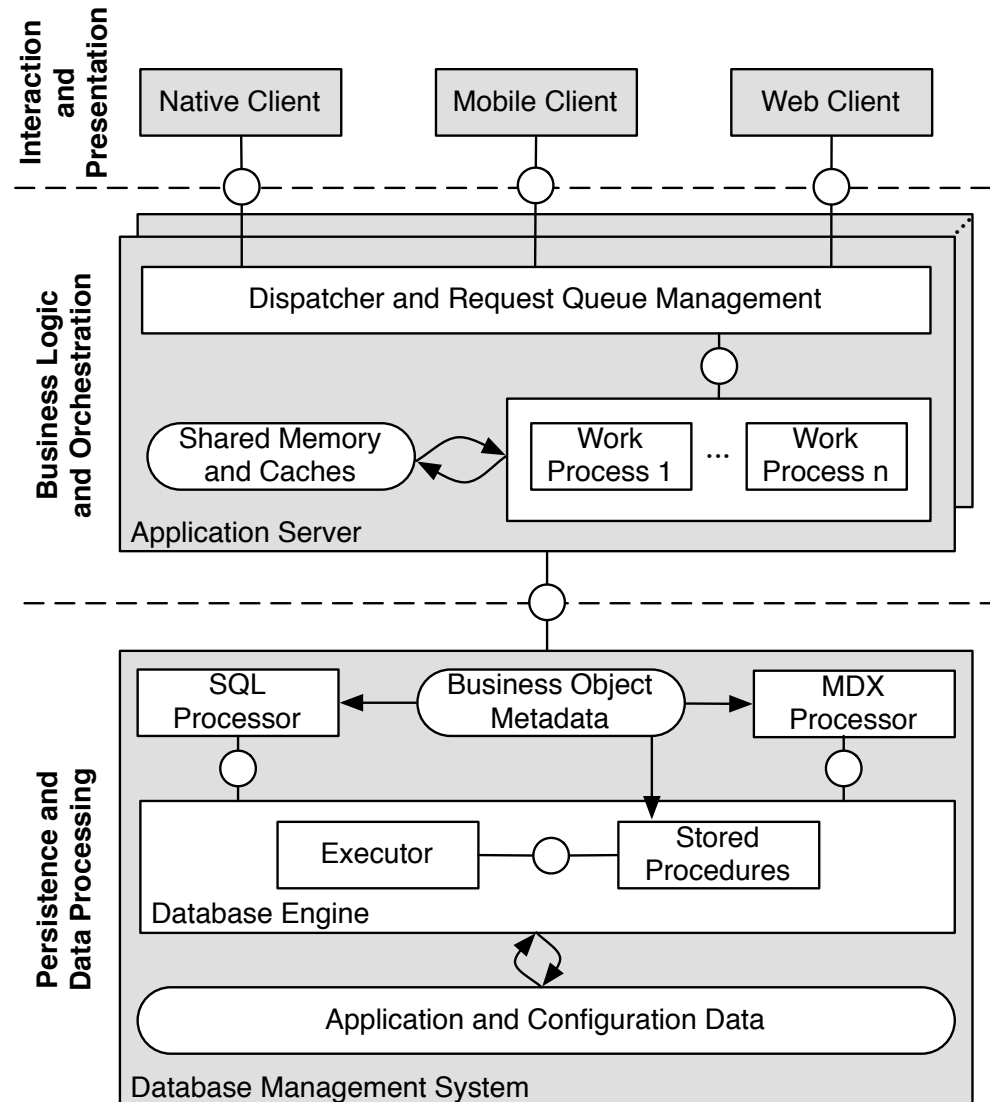
# EA process data that is not alike

5



# EA comprise multiple layers

6



# So What?

7

Facebook has more than 100 terabytes of data...

# So What?

8

Facebook has more than 150 terabytes of  
**new data per day**

**Reflect on what you've heard so far ! Does Facebook ...**

... have to deal with different customer requirements in various industries in different countries ?

... have to provide an infrastructure to support individual customizing ?

... have to be afraid of being sued when they have a downtime ?

... have to consider different user interaction paradigms ?

... have the need for consistency ?

... send you an invoice ?