

# Comparing Features for Ranking Relationships Between Financial Entities based on Text

Tim Repke, Michael Loster, Ralf Krestel

## FEIII Challenge 2017

Financial Entity Identification and Information Integration Challenge 2017

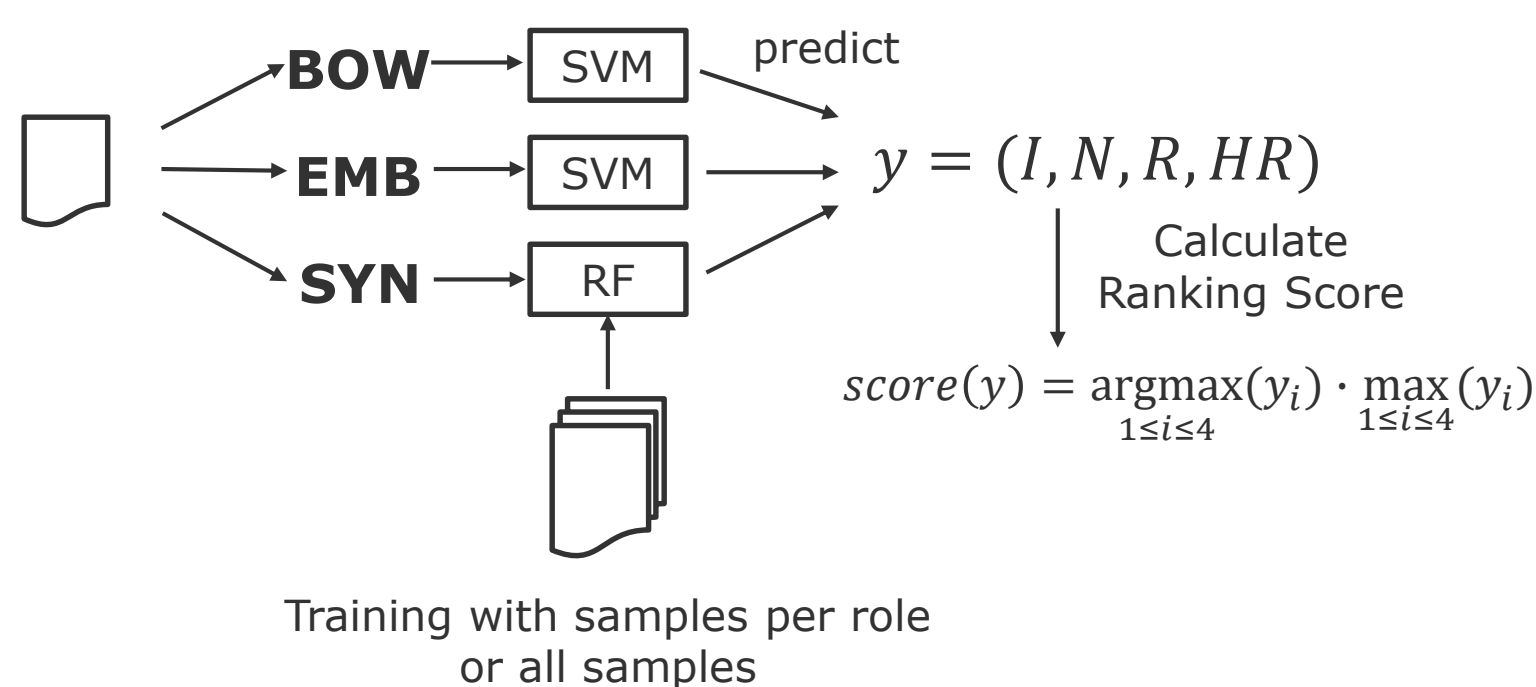
### Given:

- set of tuples (financial entity A, role, financial entity B)
- text snippet the tuple was extracted from (10-K, 10-Q filings)
- tuples labelled by experts as (highly) relevant, neutral, irrelevant

### Challenge:

- per role, rank relationship tuples by relevance

## Our Approach

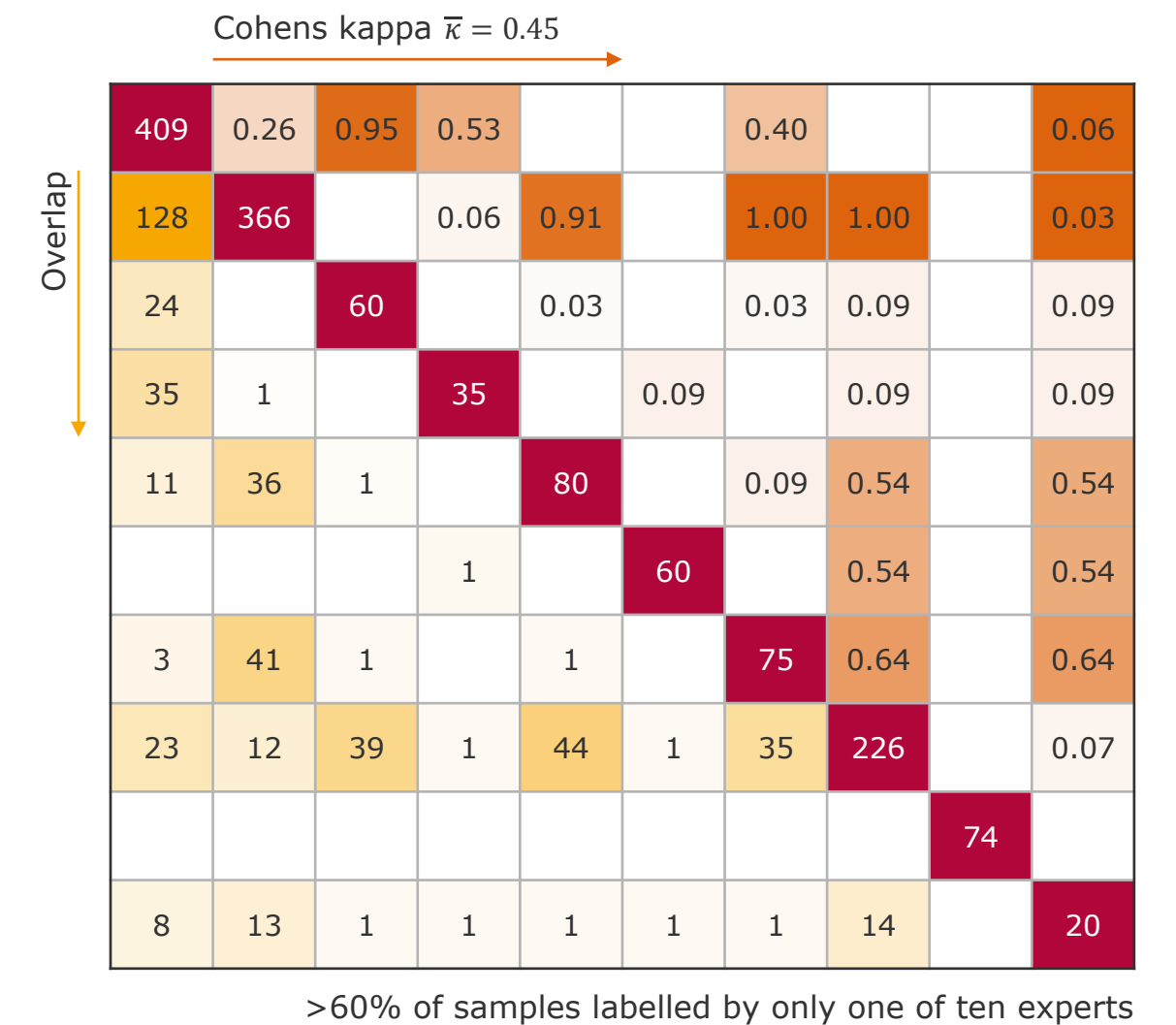


## The Dataset

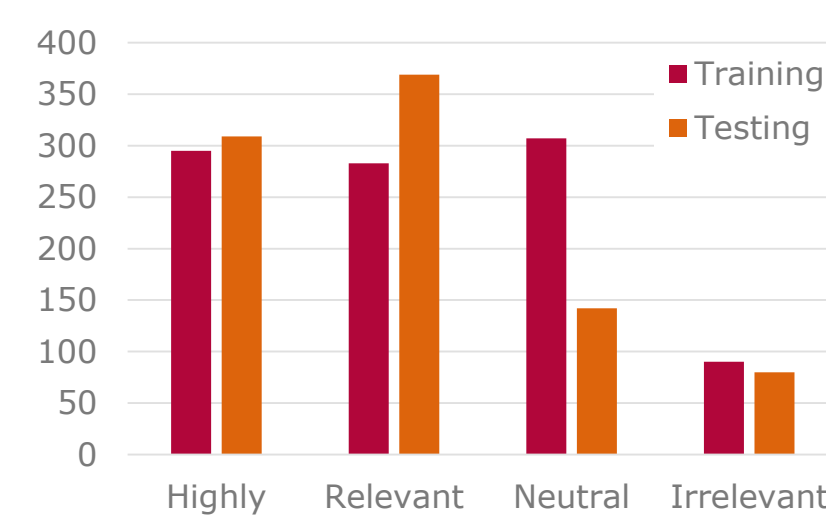
### Role Distribution

Role-Keyword	Training	Testing
Affiliate	186	129
Agent	61	40
Counterpart	64	108
Guarantor	34	28
Insurer	19	47
Issuer	129	98
Seller	20	49
Servicer	21	57
Trustee	420	304
Underwriter	21	40
All	975	900

### Inter Annotator Agreement



### Relevance Distribution



### Implications on NDCG

- Baseline (**random**): average NDCG of 100 random sorts
- Baseline (**worst**): NDCG of inverse perfect order

ideal	4	4	3	3	2	2	1	
worst	1	2	2	3	3	3	4	4

## Features

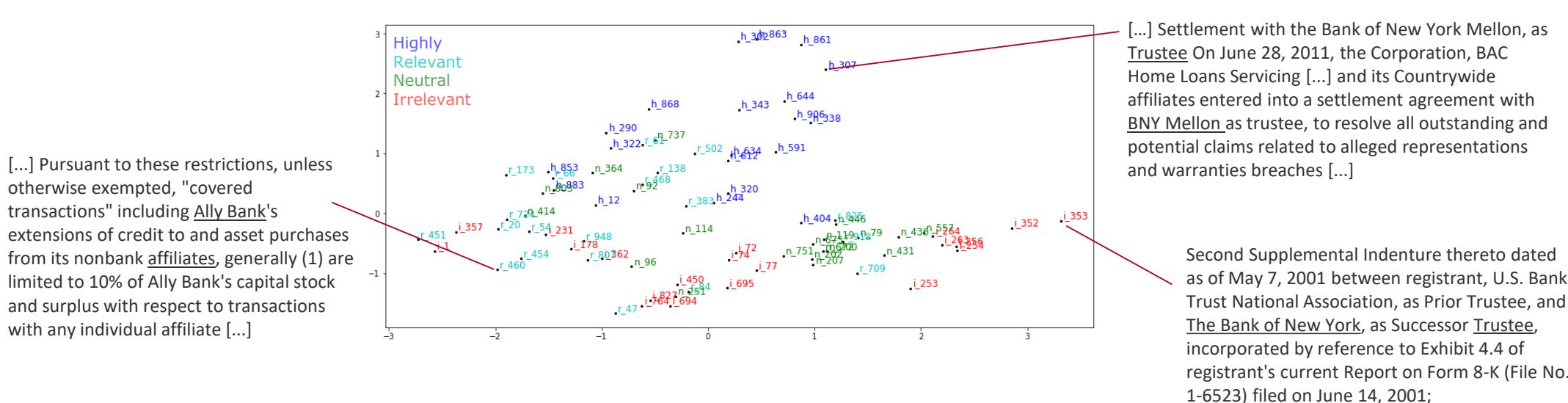
### Bag-of-Words (BOW)

Utilise wording that correlates with relevance



### Paragraph Embeddings (EMB) [Mikolov, 2013]

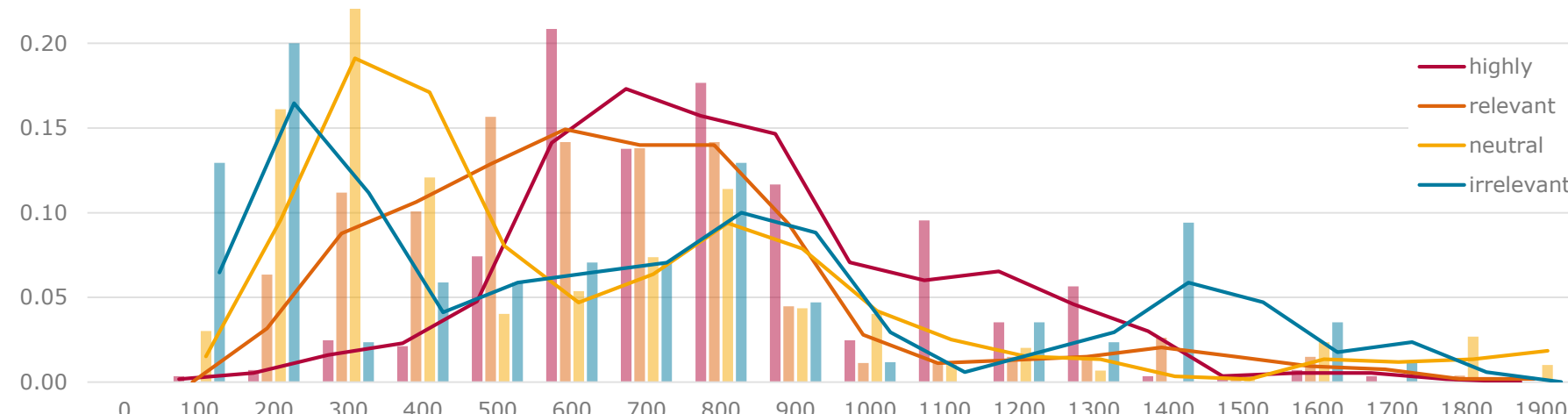
Dense vector representations of sentences with embeddings trained on full-length filings



### Syntax Features (SYN)

Manually derived features independent of wording on character, token, and POS-tag level

Example: Histogram of snippet length (characters)



## Results

Approach	NDCG (std)	F1-Score
Random	0.88 (0.03)	--
Worst	0.72 (0.06)	--
BOW	0.88 (0.05)	0.34 (0.13)
EMB	0.89 (0.04)	0.24 (0.18)
SYN	0.94 (0.04)	<b>0.44</b> (0.11)
Vote	<b>0.95</b> (0.04)	0.43 (0.12)

### Confusion Matrix

- Good performance for highly relevant samples
- Predictions biased towards relevant
- Weighting during training doesn't resolve bias
- Classification performance only secondary, using predictions to calculate ranking score partly resolves bias

Predicted annotated	Highly	Relevant	Neutral	Irrelevant
Highly	0.73	0.23	0.04	0.00
Relevant	0.25	0.39	0.34	0.02
Neutral	0.21	0.56	0.17	0.06
Irrelevant	0.09	0.54	0.21	0.16

### Challenge Results

Name	gt1	gt2	gt3	gt4	gt5	SUM	Ranking
P1	16 (0.66)	16 (0.84)	16 (0.52)	17 (0.8)	15 (0.71)	102	17
P2	13 (0.69)	12 (0.87)	14 (0.54)	13 (0.81)	14 (0.71)	74	12
P3 scored_full_all	8 (0.74)	8 (0.89)	7 (0.6)	8 (0.84)	9 (0.74)	39	6
P4 scored_full_bow	15 (0.67)	15 (0.86)	15 (0.54)	12 (0.82)	5 (0.74)	85	16
P5 scored_full_emb	10 (0.72)	11 (0.87)	12 (0.56)	11 (0.82)	16 (0.7)	74	12
<b>P6 scored_full_syn</b>	<b>3 (0.82)</b>	<b>2 (0.92)</b>	<b>4 (0.65)</b>	<b>2 (0.9)</b>	<b>3 (0.76)</b>	<b>16</b>	<b>2</b>
P7 scored_role_all	12 (0.69)	13 (0.86)	11 (0.56)	16 (0.81)	13 (0.72)	80	15
P8 scored_role_bow	7 (0.78)	7 (0.9)	2 (0.65)	7 (0.86)	4 (0.75)	40	7
P9 scored_role_emb	11 (0.72)	10 (0.87)	10 (0.57)	14 (0.81)	17 (0.7)	76	14
P10 scored_role_syn	6 (0.79)	6 (0.9)	1 (0.65)	4 (0.88)	2 (0.78)	33	4
P11	17 (0.62)	17 (0.84)	17 (0.51)	10 (0.82)	1 (0.78)	72	11
P12	4 (0.81)	4 (0.92)	6 (0.61)	5 (0.88)	12 (0.72)	45	8
P13	14 (0.68)	14 (0.86)	13 (0.55)	15 (0.81)	11 (0.73)	68	10
P14	9 (0.74)	9 (0.88)	8 (0.6)	9 (0.84)	8 (0.74)	49	9
P15	2 (0.84)	3 (0.92)	3 (0.65)	3 (0.89)	7 (0.74)	19	3
P16	5 (0.79)	5 (0.91)	9 (0.6)	6 (0.87)	10 (0.73)	33	4
P17	1 (0.85)	1 (0.93)	5 (0.64)	1 (0.9)	6 (0.74)	9	1

- gt1: H+V=4; H=3; R+V/R,N, I = 0.
- gt2: H+V=4; H=3; R+V=2; R=2; N=1; I = 0.
- gt3: H+V=4; H, R+V, R, N, I = 0.
- gt4: H+V=4; H=3; R+V=3.5; R, N, I = 0.
- gt5: H+V=4; R+V=3.5; H, R, N, I = 0.

### Contact

Tim Repke ([tim.repke@hpi.de](mailto:tim.repke@hpi.de))  
Web: <https://hpi.de/naumann>

Rudolf-Breitscheid-Str. 187  
14482 Potsdam, Germany