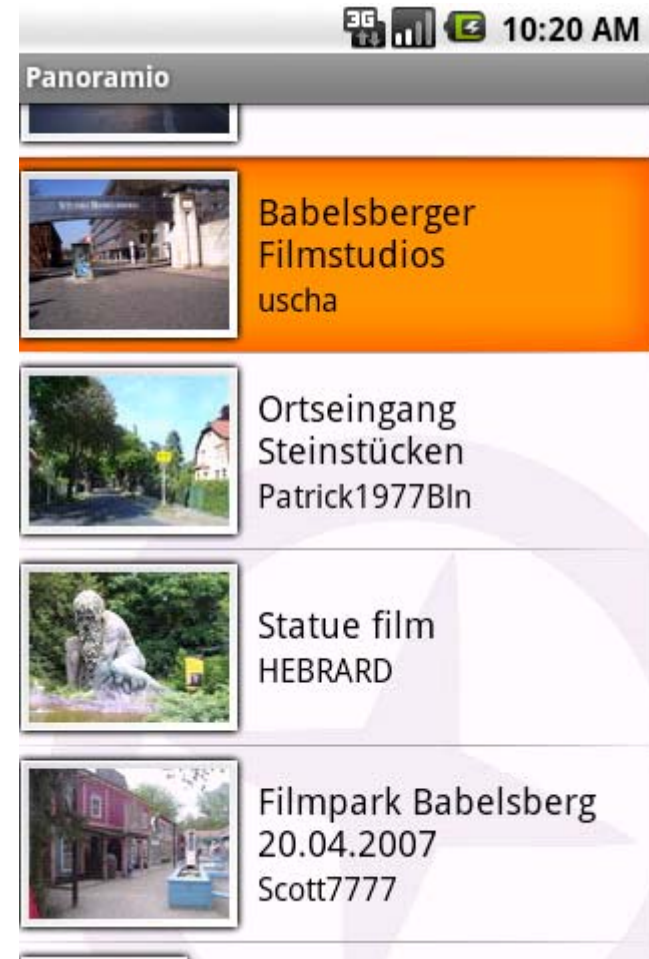
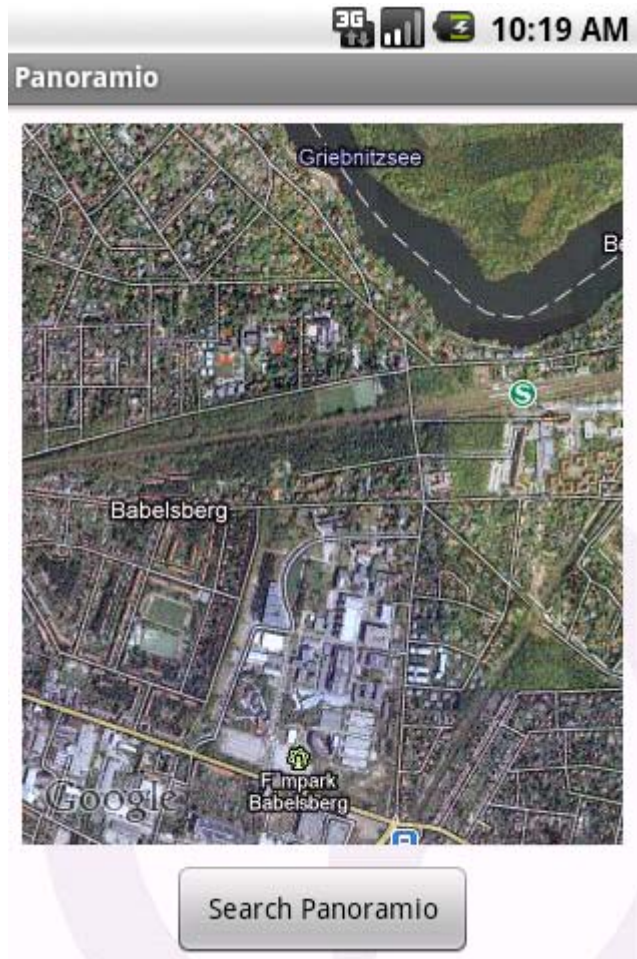


# Mobile Application Development with Android

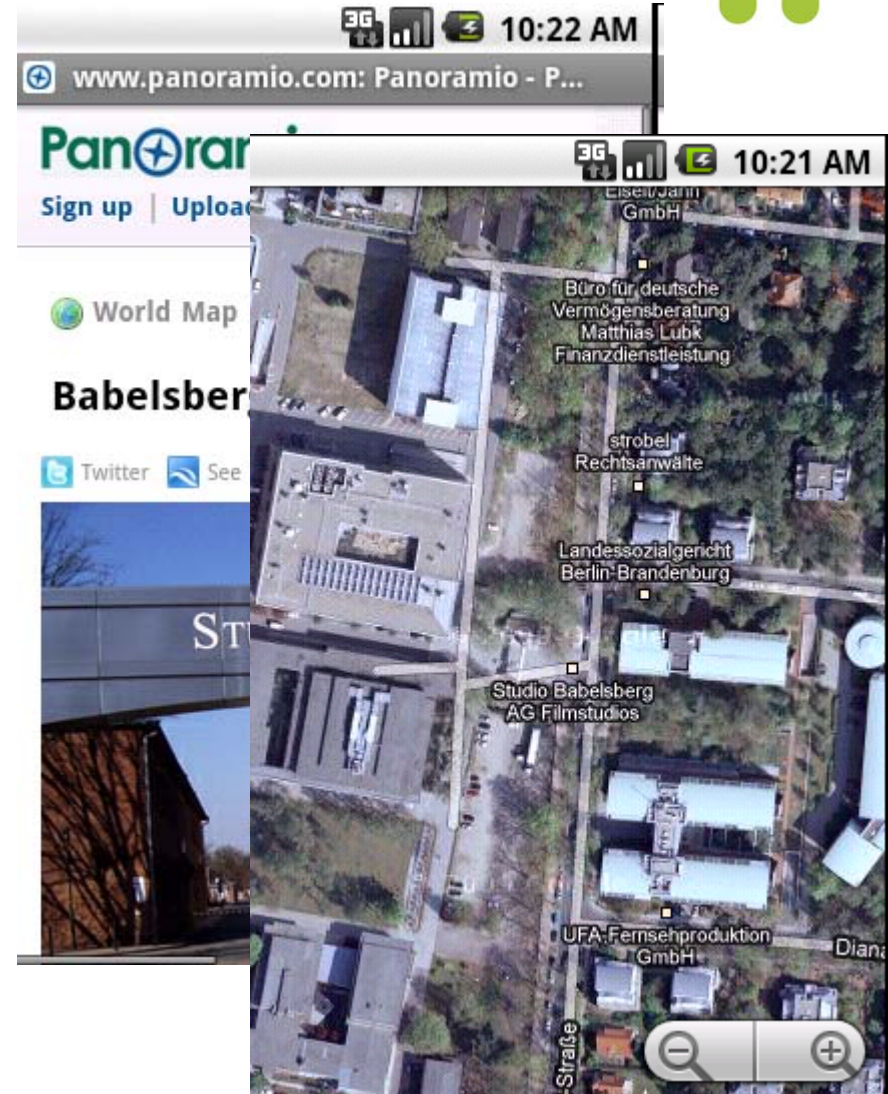
Felix Naumann  
Alexander Albrecht

2010-04-26

# Application Development - Walkthrough



# Application Development - Walkthrough

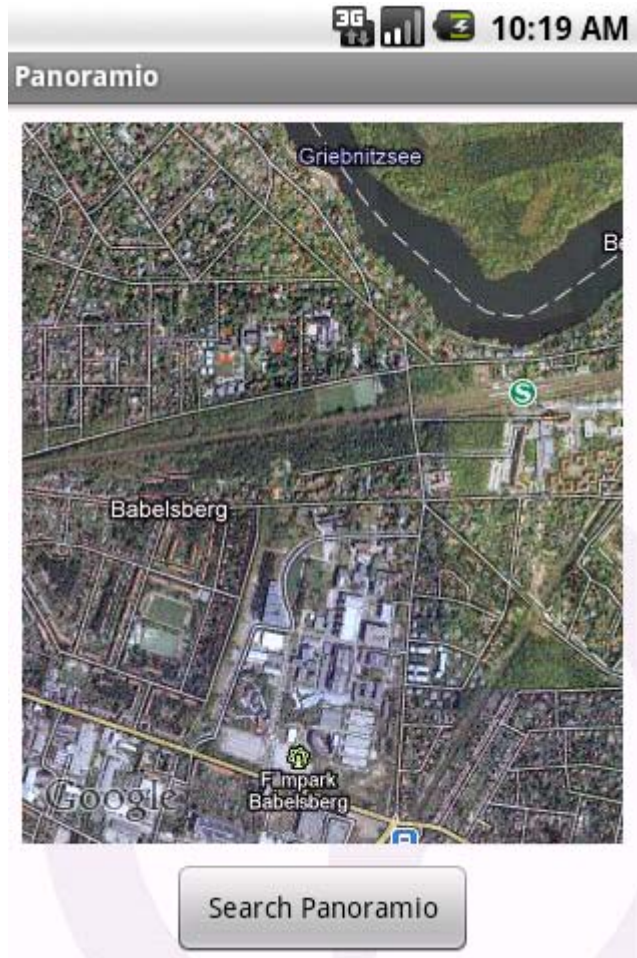


# Map API Key & GPS



- Add Google APIs to AVD
- [Google Tutorial](#)
  - **keytool**
    - list
    - alias androiddebugkey
    - keystore ~/.android/debug.keystore
    - storepass android
    - keypass android
- GPS
  - telnet localhost 5554
  - geo fix 13.131752 52.394773 (*HPI, Potsdam*)
  - geo fix 37.620878 55.753794 (*Red Square, Moscow*)

# Application Development - Walkthrough



```
<?xml version="1.0" encoding="utf-8"?>
<LinearLayout xmlns:android="http://schemas.android.com/apk/res/a
    android:orientation="vertical"
    android:layout_width="fill_parent"
    android:layout_height="fill_parent"
    >
    <FrameLayout
        android:layout_width="fill_parent"
        android:layout_height="0dip"
        android:layout_weight="1"
        android:padding="10dip">
        <com.google.android.maps.MapView
            android:id="@+id/mapview"
            android:layout_width="fill_parent"
            android:layout_height="fill_parent"
            android:enabled="true"
            android:clickable="true"
            android:apiKey="your_map_api_key"
        />
    </FrameLayout>
    <Button
        android:id="@+id/go"
        android:layout_width="wrap_content"
        android:layout_height="wrap_content"
        android:layout_gravity="center_horizontal"

        android:text="@string/go"
        android:minWidth="150dip"
        android:layout_marginBottom="2dip"
    />
</LinearLayout>
```

# DEMO



- [Android Developers Blog: Panoramio](#)